

Crystaltechno Ltd. offers serial production of spherical lenses from glass and crystals using CNC machines Optotech.

plano-concave, plano-convex, biconcave, biconvex, convex-concave (positive and negative meniscuses)

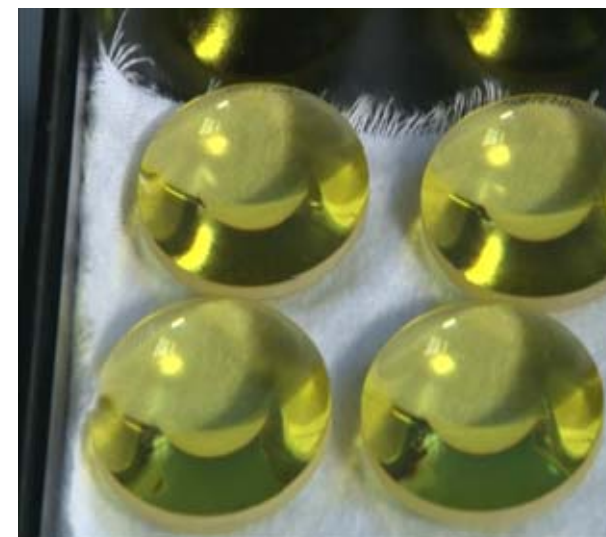


Lenses diameter (2 – 30) mm. Productivity (500 - 2000) pcs. per month, depending on specification. Minimum order quantity 200 pcs.

The processed materials: glass BK7, fused silica, ZnSe zinc selenide, ZnS zinc sulfide, Si silicon, Ge Germanium, CaF2 calcium fluoride, BaF2 barium fluoride and MgF2 magnesium fluoride

Specification

	Parameter	Value	
1	Curvature radius of convex surface, R, mm	Rmin. = 2 mm, Rmax. = ∞	
2	Curvature radius of concave surface, R, mm	Rmin. = 2 mm, Rmax. = ∞	
3	Radius tolerance, ΔR	from ± 0.05% to (0.02R/1000)% depending on radius value	
4	Round lenses, diameter Ø	Ømin = 2 mm	Ømax = 30 mm
5	Diameter tolerance, mm	± 0,05	± 0,05
6	Thickness tolerance, mm	± 0,01	± 0,01
7	Centration, mm	0,005	0,005
8	Surface quality, S/D <i>for glass and fused silica</i> <i>for crystals</i>	40-20 60-40	40-20 60-40
9	Surface figure and irregularity in case of manufacturing according to test plate <i>for glass and fused silica</i> <i>for crystals</i>	Lambda/10 and Lambda/20 at 633nm per 30 mm Lambda/4 and Lambda/10 at 633nm per 30 mm	



Two sides' antireflection coatings of lenses are manufactured according to customer's specification requirement. Ready optics is supplied with passport and interferogram.

If you are interested please feel free to contact us! You can receive the additional information

Crystaltechno Ltd. phone. (495) 234-59-51 (495) 234-59-52, fax (495) 433-51-15 e-mail: sales@crystaltechno.com